

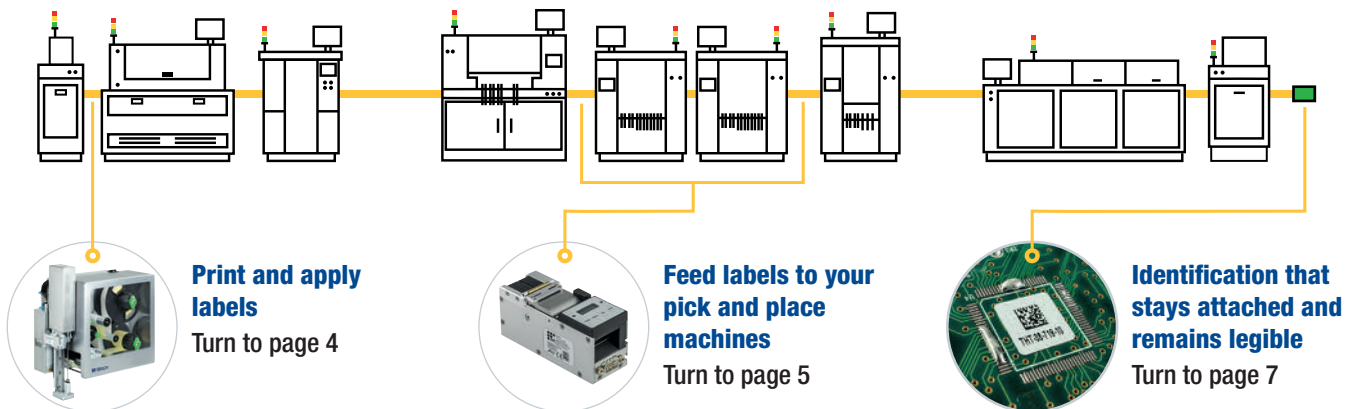
Automated printed circuit board labelling

Enable Smart Manufacturing

Enable Smart Manufacturing

In Smart Manufacturing machines and systems generate, analyse and use data to optimise production efficiency, create flexible manufacturing processes and respond quickly and at low cost to changes in demand. An Industry 4.0 Smart Factory employs only systems that are interconnected and able to send or receive data from the other systems in the supply chain.

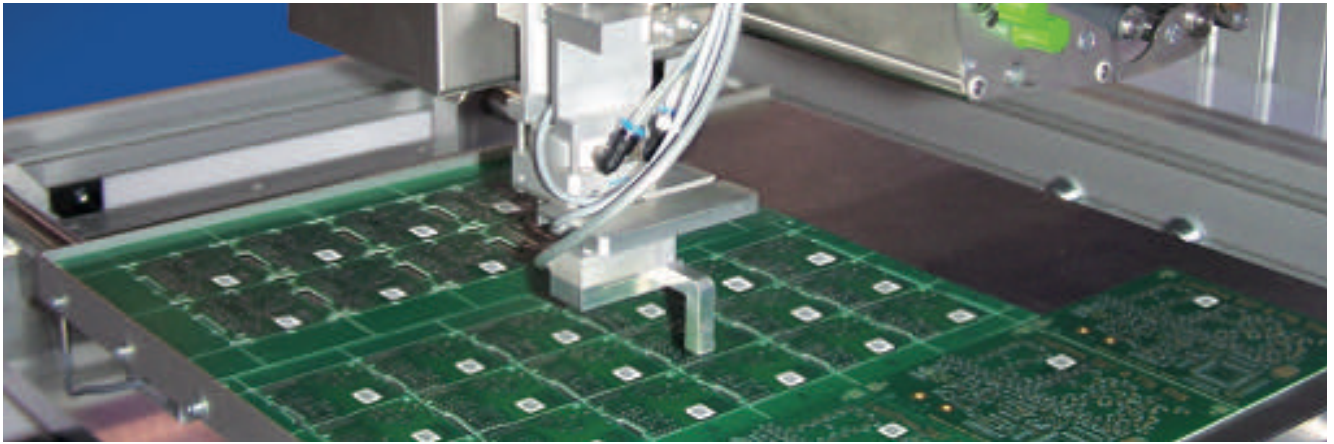
Via durable product labels that remain legible throughout entire production cycles, applied by accurate, automated print & apply systems, Brady can connect every circuit board in production to your Smart Factory. With our solution, every circuit board you produce can become a data generator to send information to your Manufacturing Execution System, to other machines and production cycles, or to your supply chain both up- and downstream.



Label your printed circuit boards

Accurate tracking of raw materials and finished goods throughout production processes can increase production efficiency, open up new markets and attract more customers by enabling a number of competitive advantages.

- increased product quality control
- increased product safety
- increased reputation and brand protection
- reduced counterfeit components
- reduced production process costs
- reduced warranty costs
- reduced product recalls
- legal compliance
- regulatory compliance



Automate your labelling

A fully automated printed circuit board labelling solution can activate the competitive advantages of Smart Manufacturing.

- increased workplace efficiency
- more data analysis for continuous improvement
- increased data accuracy
- faster problem intervention
- faster product batch localisation
- aligned raw material intake and machine operating parameters



Automated printed circuit board labelling

Brady offers a reliable and complete solution to automate printed circuit board labelling in order to enable Smart Manufacturing. Our solution includes these components:

- durable auto-apply labels
- reliable auto-apply systems
- custom support including setup, maintenance and parts
- extensive label testing in in-house laboratories



**AUTOMATED PRINT
AND APPLY**



**DURABLE
LABELS**



**CUSTOMER
SUPPORT**



**IN-HOUSE
LABORATORY**

Automatic label print & apply

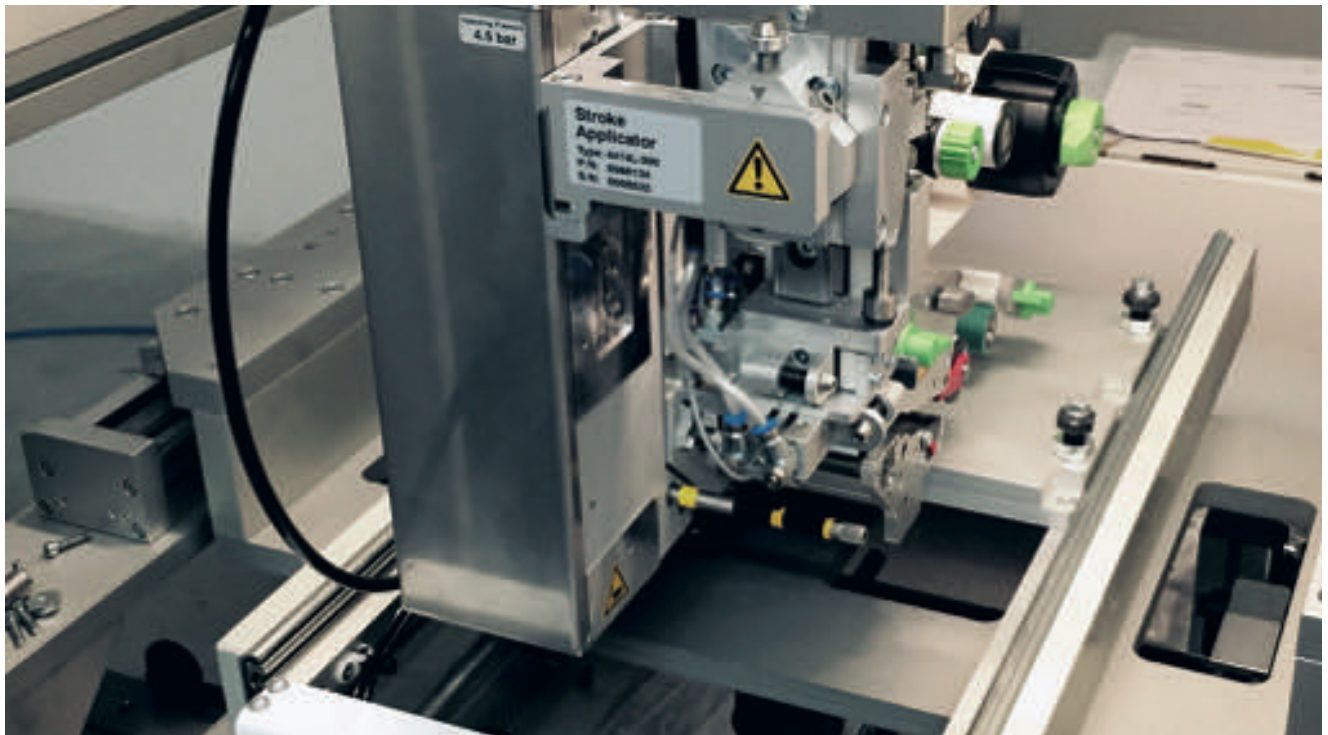
The **BradyPrinter A8500 Label Printer Applicator** reliably automates printed circuit board labelling for complete traceability. It consistently prints and applies tiny labels from our polyimide auto-apply label range that can resist the entire PCB production process.

The BradyPrinter A8500

- accurately prints and consistently applies even the tiniest 4mm x 3.18mm labels in 600 dpi on printed circuit boards
- can keep up with the pace of SMT production lines thanks to a fast processor and cycle time
- can be installed anywhere along the production line and can receive label data from most company ERP-systems
- offers industry 4.0 connectivity and is OPC UA ready. Information can be transferred by the BradyPrinter A8500 to the plant control system, which can then initiate the next action.



! Zero queue print & apply



**AUTOMATED PRINT
AND APPLY**



**DURABLE
LABELS**



**CUSTOMER
SUPPORT**



**IN-HOUSE
LABORATORY**



**Product specifications
on page 10**

Automatic label feeding

Typically our **ALF label feeder** is used as a central part of traceability solutions: integrated to machines placing components to assemblies e.g. in electronic manufacturing they allow a robust process applying uniquely serialized labels to products for traceability purposes, specifically where machine-readable bar code labels are used.

Labels are simply treated like any other component and are placed with the accuracy of your current pick and place machine. The label feeder's compact and durable design allows for flexibility and simplicity.

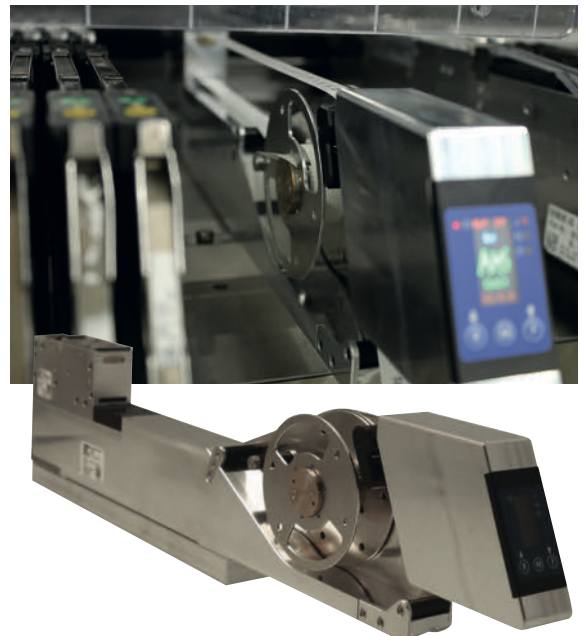
The ALF14 label feeder offers

- easy label loading and setup
- fast sensing and dispensing
- sends a warning signal when label guiding latch is left open
- easily adjustable liner width to avoid downtime
- compatibility with a wide range of label sizes
- compatibility with a range of pick & place machines
- easy integration thanks to a small footprint
- great durability
- easy signal interfacing for machine compatibility
- great reliability with Brady's printed circuit board labels.



The ALF19XS label feeder offers

- 28mm unit width. Small footprint on SMT line, which allows for a higher variety of components to be placed. At the same time opens up 1 to 2 more slots compared to the ALF14
- smallest material size: 2x2mm. Largest Label: 18x18mm. Liner Width: from 4 to 21mm. Designed to work with the label size needed
- user interface: Fast material changeover and quick adjustments through UI screen and three buttons on the outer end of the adapter
- fixed label presenting surface: labels are presented to a pad which allows for smaller labels
- remote access via Wi-Fi: get real-time status of the Label Feeder
- fully automated solution: once set up, works seamlessly in conjunction with the component placement equipment.



**AUTOMATED PRINT
AND APPLY**



**DURABLE
LABELS**



**CUSTOMER
SUPPORT**



**IN-HOUSE
LABORATORY**

Reliable & fast precision printing

The **BradyPrinter i7100 Industrial Label Printer** offers durable and highly accurate label printing for business critical high volume identification challenges in Aerospace, Defence, Mass Transit, Electronics, Automotive and Logistics industries. Quickly print a wide range of high quality identification materials for a variety of applications including cable, printed circuit board and asset & component identification.

The BradyPrinter i7100 Industrial Label Printer offers:

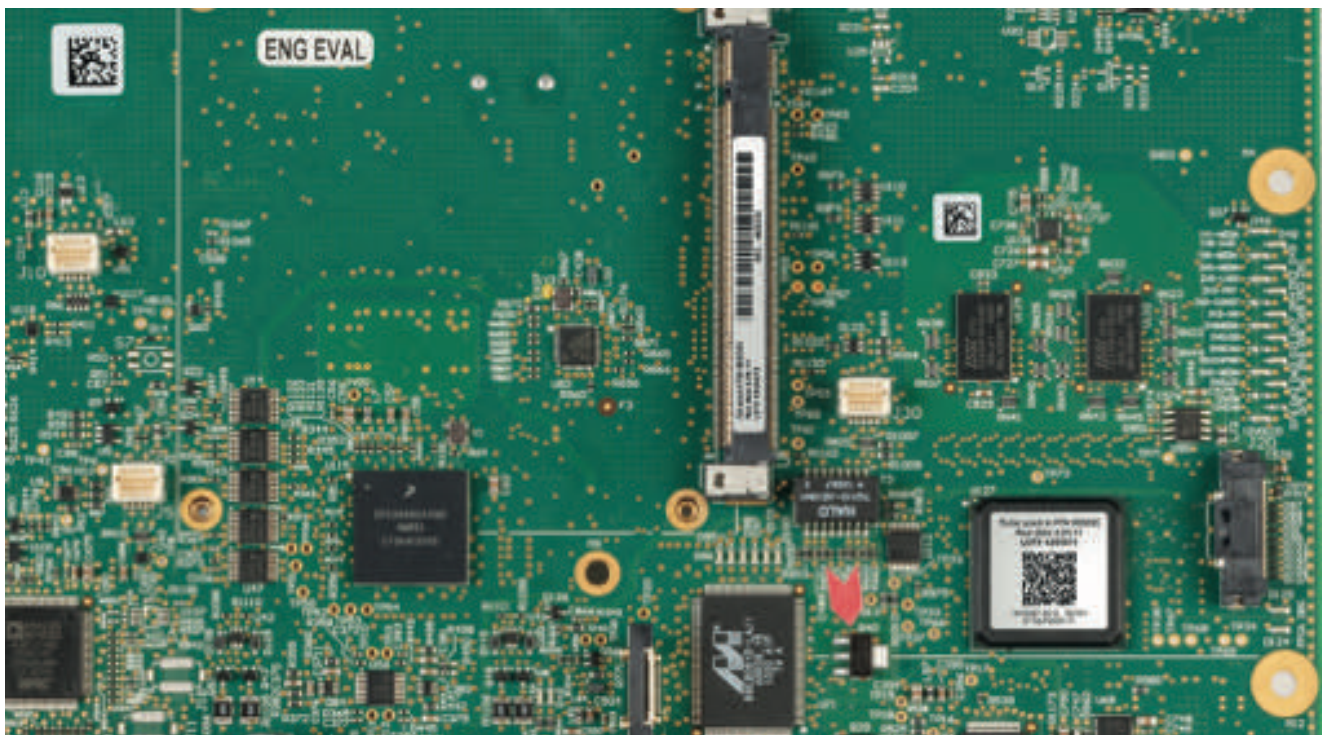
- an easily accessible touch screen interface
- a small system footprint
- fast consumable changes
- a powerful internal processor designed to handle up to 7000 labels per day
- up to 300 mm/sec print speed
- 600 dpi ultra-sharp printing
- centre alignment of prints for high printing accuracy
- interchangeable platen rollers for optimised printhead life time
- a wide range of high quality identification materials



Discover the i7100 accessories on
www.bradyeurope.com/i7100



Label rewinder MC-11



**AUTOMATED PRINT
AND APPLY**



**DURABLE
LABELS**



**CUSTOMER
SUPPORT**



**IN-HOUSE
LABORATORY**



Product specifications
on page 12

Durable printed circuit board labels

Brady's **B-7727 polyimide printed circuit board label** is specifically designed for auto-apply applications. The specially designed APL (Auto Apply Label) range has a reduced liner width and works with a smaller ribbon for ultra-compatibility with auto-apply systems.

B-7727 can withstand temperatures up to 300°C and the powerful chemicals and cleaning processes used in PCB assembly, equipment and component manufacturing.

The B-7727 printed circuit board label offers

- outstanding auto-apply compatibility thanks to a reduced liner width
- great placement accuracy and high pick-up rate
- reduced risk of adhesive bleeding
- extreme washing/aggressive cleaning applications
- top or bottom label placement
- surface mount and through-hole assembly
- high heat (300°C) resistance
- great legibility, even after exposure to chemicals
- good performance in reflow, wave solder and board washing
- abrasion resistance
- printability on-site
- available as pre-printed labels on request



Compatibility



A8500



ALF



i7100



Reduced liner width for ultra auto-apply compatibility (APL range)



Discover the full auto-apply label (APL) range on page 13



Zestron/Kyzen compatible

Brady's B-7727 printed circuit board label is compatible with cleaning agents from both Kyzen and Zestron. Our B-7727 label can resist the newest PCB cleaning agents.



AUTOMATED PRINT
AND APPLY



DURABLE
LABELS



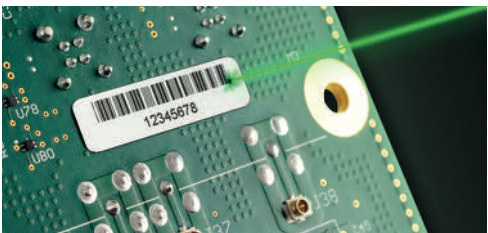
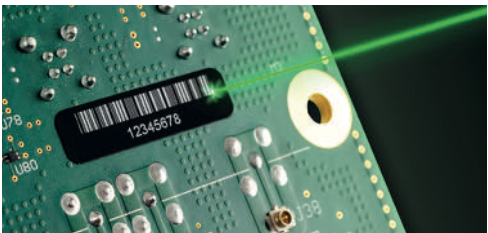
CUSTOMER
SUPPORT





IN-HOUSE
LABORATORY

Durable printed circuit board labels

Laser engravable labels are designed to increase the legibility of part markings and barcodes lasered on printed circuit boards and complex surfaces. Thanks to increased contrast, barcodes lasered on the label are easier to scan, which leads to reduced waste in supply chains with stringent traceability requirements.



Compatibility



LASER ALF

Laser engravable polyimideals offer:

- high barcode and marking legibility
- durable, high contrast markings
- reduced waste versus direct part marking
- outstanding compatibility with auto-apply systems
- available in black on white and white on black

Why use labels?

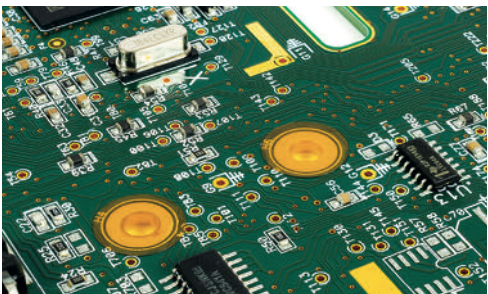
Label identification offers a number of distinct advantages for printed circuit board manufacturers:

Printing Technology Comparison Guide

Attribute	THT Printing	Laser Marking	Direct Marking
Initial equipment costs	Low	Moderate	High
Recurring costs	Moderate	Moderate	Low
Marking permanence	Good	Excellent	Excellent
Print resolution	Good	Excellent	Good
Print speed	Excellent	Good	Poor
Contrast	Excellent	Excellent	Poor*
Bar code grades	Excellent	Excellent	Poor*
Automation	Good	Excellent	Excellent
Air handling	None	Recommended	Required
Easy to re-work	YES	YES	NO

*direct marking color contrast defined by substrate and laser marking mechanism

The **B-7634 masking film for PCB's** offers excellent protection during electronic manufacturing processes, including wave soldering and hot air levelling. The polyimide masking film is ideal for auto-apply and can be removed cleanly.



Compatibility



ALF

The B-7634 masking film:

- acts as a protective film on PCB's, components and throughholes
- can be used to protect or insulate in a range of high heat applications
- can be applied automatically with a pick & place machine and the ALF Label Feeder



AUTOMATED PRINT
AND APPLY



DURABLE
LABELS



CUSTOMER
SUPPORT



IN-HOUSE
LABORATORY

Custom support

Service agreements

On top of an included 1 year warranty, Brady offers premium support service agreements for both the BradyPrinter A8500 Label Printer Applicator and the ALF Label Feeder. Service agreements are fully customisable to your needs and can include premium support by phone and/or support at your premises.

Available service agreement options:

- preventive maintenance
- fast repairs
- replacement devices
- dedicated in-house contact center
- support in 12 languages
- local presence
- man hours included
- no unexpected costs



Scanners & portable data terminals

High quality scanners are available. With portable or integrated scanners, your traceability system can evolve beyond supply chain requirements and generate data that can be analysed to create business cases for production optimisation.

Available scanner services:

- scanner purchasing
- scanner configuration
- scanner integration



Integration

Brady offers label creation software with automation options, next to advice, support and full collaboration with third parties to help integrate our traceability solutions in your production line. The advantages of Smart Manufacturing including increased production control, centralised monitoring and continuous improvement data can be fully enabled by a complete integrated printed circuit board labelling system.



In-house laboratory

Brady's in-house laboratories rigourously test our solutions in line with standard testing methods. Our scientists test the performance of complete traceability label constructions including the liner, adhesives, label materials and label top coat to deliver solutions that solve your challenges. Our in-house lab can offer test results on request or test new traceability label requirements when relevant.



**AUTOMATED PRINT
AND APPLY**



**DURABLE
LABELS**



**CUSTOMER
SUPPORT**



**IN-HOUSE
LABORATORY**

Product specifications



BradyPrinter A8500 Label Printer Applicator

Article No.	Description
306695	A8500 Print & Apply 600 dpi - for up to 50mm wide consumables to be combined with left applicator
306696	A8500 Print & Apply 300 dpi - for up to 101mm wide consumables to be combined with left applicator
306697	A8500 Print & Apply 600 dpi - for up to 50mm wide consumables to be combined with right applicator
306698	A8500 Print & Apply 300 dpi - for up to 101mm wide consumables to be combined with right applicator
306699	Left applicator - cylinder stroke 300 mm - horizontal precision guide in feed direction
306700	Right applicator - cylinder stroke 300 mm - horizontal precision guide in feed direction
306701	Left applicator - cylinder stroke 300 mm - horizontal rotary cylinder (angle of rotation 90 other 180°)
306702	Right applicator - cylinder stroke 300 mm - horizontal rotary cylinder (angle of rotation 90 other 180°)
306703	Left applicator - cylinder stroke 300 mm - adjustable horizontal precision guides in X and Y direction (up to Y = 13 mm, X = 5 mm)
306704	Right applicator - cylinder stroke 300 mm - adjustable horizontal precision guides in X and Y direction (up to Y = 13 mm, X = 5 mm)
306705	A8500 Cover 2L
306706	A8500 Cover 4L
306707	A8500 Cover 2R
306708	A8500 Cover 4R

Specifications	
Description	Print and apply system precision developed for applications such as PCB assembly and marking, component and product marking in high quality.
Toepassingen	Higher volume applications such as PCB marking, component and product marking in high quality demanding industries like automotive, electronics and manufacturing.
Hours of Operation	24 hours/7 days
Recommended Usage per Day	7000 labels
Software Compatibility	Brady Workstation, Windows based driver for 3rd party software use
Colour Capability	Monocolour
Connectivity Options	Serial USB Ethernet I/O connection WiFi (optional)
Stand-alone Printing (Detached from PC)	Stand-alone & Peripheral
Features	Applicators
Labelafmetingen (mm)	Max. Label Width: 58.00 mm (A8500-62) or 114.00 mm (A8500-34)
	Min. Label Width: 4.00 mm (A8500-62) or 20.00 mm (A8500-34)
	Min. Label Height: 3.00 mm (A8500-62) or 4.00 mm (A8500-34)
	Max. Print Width: 57.00 mm (A8500-62) or 105.60 mm (A8500-34)
Print Speed (mm/sec)	150 mm/sec (A8500-62) or 300 mm/sec (A8500-34)
Print Technology	Thermal Transfer
Print Resolution (dpi)	300 / 600

Accessories

Article No.	Description
133251	Printer Cleaning Kit, Thermal Transfer Printers

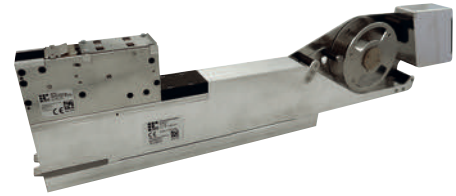


A8500 Applicators

Article No.	Description
710963	Left applicator, cyl. stroke 200 mm, hor. precision guide in feed direction
710964	Left applicator, cyl. stroke 300 mm, hor. precision guide in feed direction
710965	Left applicator, cylinder stroke 200 mm, angle of rotation 90 other 180°
710966	Left applicator, cylinder stroke 300 mm, angle of rotation 90 other 180°
710969	Left applicator, cylinder stroke 200 mm, adj. Hor. precision guides
710970	Left applicator, cylinder stroke 300 mm, adj. Hor. precision guides
710972	Right applicator, cyl. stroke 200 mm, hor. precision guide in feed direction
710973	Right applicator, cyl. stroke 300 mm, hor. precision guide in feed direction
710974	Right applicator, cylinder stroke 200 mm, horizontal rotary cylinder
710975	Right applicator, cylinder stroke 300 mm, horizontal rotary cylinder
710979	Right applicator, cyl. stroke 200 mm adj. Hor. precision guides in X and Y dir
710980	Right applicator, cyl. stroke 300 mm adj. Hor. precision guides in X and Y dir
711040	Left applicator, cyl. stroke 200 mm with pressure reducer
711041	Left applicator, cyl. stroke 300 mm with pressure reducer
711042	Left applicator, cyl. stroke 200 mm, hor. rotary cylinder w. pressure reducer
711043	Left applicator, cyl. stroke 300 mm, hor. rotary cylinder w. pressure reducer
711046	Left applicator, cyl. stroke 200 mm adj. Hor. precision guides w press reducer
711047	Left applicator, cyl. stroke 300 mm adj. Hor. precision guides w press reducer
711048	Right appl., cyl. stroke 200 mm, hor. precision guide in feed dir. w press red
711049	Right appl., cyl. stroke 300 mm, hor. precision guide in feed dir. w press red
711050	Right applicator, cyl stroke 200 mm, hor rotary cyl. with pressure reducer
711051	Right applicator, cyl stroke 300 mm, hor rotary cyl. with pressure reducer
711055	Right appl, cyl stroke 200 mm, adj hor precision guides with pressure reducer
711056	Right appl, cyl stroke 300 mm, adj hor precision guides with pressure reducer

Product specifications

ALF-14 Label Feeder/ALF19-XS Label Feeder

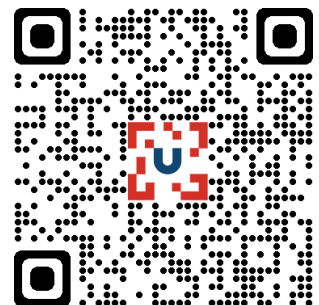


Specifications	ALF14-25 Labelfeeder	ALF19-XS Labelfeeder
Weight	0.45 kg	0.4 kg
Size W x D x L (mm)	43 x 115 x 54	30 x 495 x 95
Height of pickup position (mm)	50	50
Approval/Compliance	CE, WEEE, RoHS	CE, WEEE, RoHS
Voltage	24 V	24 V
Power Consumption	max. 24 W	max. 40 W
Current Consumption	max. 1 A	max. 1.66 A
Power Supply	Main supply wall plug charger, Machine cable (Eurplacer, Fritsch, Juki, Siemens, Yamaha)	Main supply wall plug charger, Machine cable (Eurplacer, Fritsch, Juki, Siemens, Yamaha)
Compatible Pick & Place Systems	Siemens ASM Siplace Series, Europlacer, Fritsch, Fuji NXT, Heeb innotec, Hitachi, Juki Series 2000, MyData, Samsung SM Series, Yamaha, Assembléon (others pending)	Siemens ASM Siplace Series, Europlacer, Fritsch, Fuji NXT, Heeb innotec, Hitachi, Juki Series 2000, MyData, Samsung SM Series, Yamaha, Assembléon, Others pending
Signal Interface	- Label Feed Request - Label ready - Error	- Label Feed Request - Label ready - Error
Minimum Label Size (mm)	4 x 4	2 x 2
Maximum Label Size (mm)	23 x 23	18 x 18
Max. Liner Width (mm)	25	21
Label Conveying Speed	10-200 mm/s	10 - 200 mm/s



ALF label feeder/SMT machine compatibility

Visit our website to determine the compatibility of your SMT machine with our ALF label feeders, we support all major manufacturers including Siplace, Fuji and Juki.



Product specifications

BradyPrinter i7100 Industrial label printer

Printer Specifications	
Description	BradyPrinter i7100 Industrial Label Printer
Includes	This i7100 printer comes in a cardboard box. It ships with a power cord, 2 empty ribbon cores, a USB cable, a product CD holding the driver, the user manual in languages, the configuration/settings manual in English, a printed user manual in English and a Brady Workstation Basic Suite or a Brady Workstation PWID Suite
Applications	Cable & wire identification Circuit board & component identification General & industrial identification Laboratory identification
Print Speed (mm/sec)	up to 300
Internal Memory	256MB RAM, 50MB IFFS Flash, SD card, slot up to 512GB
Software Compatibility	Brady Workstation, LabelMark, Windows based driver for 3rd party software use, CodeSoft
Recommended Usage per Day	7000
Colour Capability	Monocolour
Language Support	Arabic (Egypt), Bulgarian, Croatian, Czech, Danish, Dutch, English, Finnish, French, German, Greek, Hungarian, Italian, Lithuanian, Macedonian, Norwegian (Bokmål), Persian (Farsi), Polish, Portuguese, Romanian, Russian, Serbian, Slovenian, Spanish, Swedish, Turkish
Weight (kg)	10
Size W x H x D (mm)	252 x 288 x 460
Max. Label Width (mm)	110.00 mm
Min. Label Width (mm)	4.00 mm
Max. Liner Width (mm)	114.00 mm
Min. Liner Width (mm)	9.00 mm
Max. Print Width (mm)	105.70 mm
Warranty	2 years



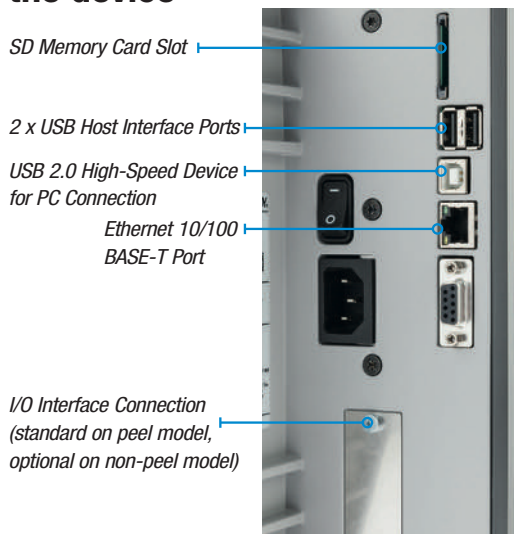
Article No.	Order Reference	Description
300 dpi		
149046	149046	BradyPrinter i7100 300 dpi - EU
198607	198607	BradyPrinter i7100 300 dpi - EU with Brady Workstation PWID Suite
149049	149049	BradyPrinter i7100 300 dpi - EU with Peel function
198608	198608	BradyPrinter i7100 300 dpi - EU with Peel function and Brady Workstation PWID Suite
149067	149067	BradyPrinter i7100 300 dpi - UK
198611	198611	BradyPrinter i7100 300 dpi - UK with Brady Workstation PWID Suite
149068	149068	BradyPrinter i7100 300 dpi - UK with Peel function
198609	198609	BradyPrinter i7100 300 dpi - UK with Peel function and Brady Workstation PWID Suite
197690	197690	BradyPrinter i7100 300 dpi - US
198612	198612	BradyPrinter i7100 300 dpi - US with Brady Workstation PWID Suite
197689	197689	BradyPrinter i7100 300 dpi - US with Peel function
198610	198610	BradyPrinter i7100 300 dpi - US with Peel function and Brady Workstation PWID Suite
600 dpi		
149047	149047	BradyPrinter i7100 600 dpi - EU
198613	198613	BradyPrinter i7100 600 dpi - EU with Brady Workstation PWID suite
149052	149052	BradyPrinter i7100 600 dpi - EU with Peel function
198614	198614	BradyPrinter i7100 600 dpi - EU with Peel function and Brady Workstation PWID Suite
149066	149066	BradyPrinter i7100 600 dpi - UK
198617	198617	BradyPrinter i7100 600 dpi - UK with Brady Workstation PWID Suite
149065	149065	BradyPrinter i7100 600 dpi - UK with Peel function
198615	198615	BradyPrinter i7100 600 dpi - UK with Peel function and Brady Workstation PWID Suite
197692	197692	BradyPrinter i7100 600 dpi - US
198618	198618	BradyPrinter i7100 600 dpi - US with Brady Workstation PWID Suite
197691	197691	BradyPrinter i7100 600 dpi - US with Peel function
198616	198616	BradyPrinter i7100 600 dpi - US with Peel function with Brady Workstation PWID Suite



Brady Workstation Product and Wire Identification Software Suite

Quickly identify your products and wires with customised text or graphical labels, using serialised or imported data. Workstation.BradylD.com/ProductandWire

Interfaces on the back of the device



BradyPrinter i7100 accessories

Article No.	Order Reference	Description
133251	133251	Printer Cleaning Kit, Thermal Transfer Printers
149043	149043	120mm Platen Roller with synthetic rubber coating
149044	149044	120mm Platen Roller with silicone rubber coating
149048	149048	25mm Platen Roller with synthetic rubber coating
149051	149051	120mm Rewind Assist Roller with synthetic rubber coating
149054	149054	80mm Platen Roller with synthetic rubber coating
149055	149055	50mm Platen Roller with synthetic rubber coating
149069	149069	Cutter CU400 with Tray
149070	149070	Antistatic Brush
149071	149071	Label Selection I/O Box
149072	149072	Present Sensor PS1000MP
149073	149073	I/O Interface Connector SUB-D 25pins
149074	149074	Rewind Guide Plate RG400
149075	149075	Present Sensor PS900
149077	149077	I/O Interface
149078	149078	Perforation Cutter PCU400
149080	149080	Bluetooth USB Adapter
149131	149131	USB Wlan Stick with External Antenna
149132	149132	i7100 Adapter for 100mm Core
149135	149135	i7100 Extended Peel off plate DP410
149207	149207	i7100 Tear off Plate
149208	149208	i7100 Spare Hex Key Tool
197823	197823	SD Memory card 8GB

Printed circuit board labels

Circuit board label

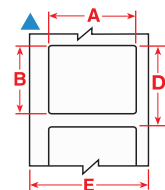
Blank labels

Diagram	Order Reference	Colour	Finish	Width A (mm)	Height B (mm)	Vertical Repeat D (mm)	Web Width E (mm)	Labels per Roll	Recommended Ribbon
B-7727: Polyimide									
▲	APL-07-7727-10	White	Gloss	19.05	6.35	10.16	22.23	10000	R6000HF
▲	APL-01-7727-10	White	Gloss	5.00	5.00	7.99	11.43	10000	R6000HF
▲	APL-02-7727-10	White	Gloss	6.35	6.35	10.16	11.43	10000	R6000HF
▲	APL-03-7727-10	White	Gloss	7.00	7.00	10.85	11.43	10000	R6000HF
▲	APL-05-7727-10	White	Gloss	9.53	9.53	12.09	12.70	10000	R6000HF



Pre-printed labels

Diagram	Order Reference	Colour	Finish	Width A (mm)	Height B (mm)	Vertical Repeat D (mm)	Web Width E (mm)	Labels per Roll	Recommended Ribbon
B-7727: Polyimide									
▲	APL-07-7727-10-PRT	White	Gloss	19.05	6.35	10.16	22.23	10000	R6000HF
▲	APL-01-7727-10-PRT	White	Gloss	5.00	5.00	7.99	11.43	10000	R6000HF
▲	APL-02-7727-10-PRT	White	Gloss	6.35	6.35	10.16	11.43	10000	R6000HF
▲	APL-03-7727-10-PRT	White	Gloss	7.00	7.00	10.85	11.43	10000	R6000HF
▲	APL-05-7727-10-PRT	White	Gloss	9.53	9.53	12.09	12.70	10000	R6000HF



Print ribbon

Order Reference	Colour	Width (mm)	Length (m)
R6000HF 30mmx300m /0	Black	30.00	300.00

Laser engravable labels B-730 range

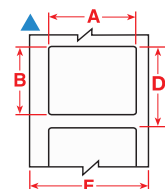
Standard labels

Diagram	Order Reference	Colour	Finish	Width A (mm)	Height B (mm)	Vertical Repeat D (mm)	Web Width E (mm)	Labels per Roll
B-730: Laser-engravable Polyimide								
▲	LZR-212-730-10	Black	Matt	19.00	6.35	10.16	25.00	10000
▲	LZR-208-730-10	Black	Matt	5.00	5.00	7.98	25.00	10000
▲	LZR-209-730-10	Black	Matt	6.35	6.35	10.16	25.00	10000
▲	LZR-210-730-10	Black	Matt	9.53	9.53	12.70	25.00	5000



Auto-apply (APL) labels

Diagram	Order Reference	Colour	Finish	Width A (mm)	Height B (mm)	Vertical Repeat D (mm)	Web Width E (mm)	Labels per Roll
B-730: Laser-engravable Polyimide								
▲	APL-07-730-10	Black	Matt	19.05	6.35	10.16	22.23	10000
▲	APL-01-730-10	Black	Matt	5.00	5.00	7.99	11.43	10000
▲	APL-02-730-10	Black	Matt	6.35	6.35	10.16	11.43	10000
▲	APL-03-730-10	Black	Matt	7.00	7.00	10.85	11.43	10000
▲	APL-05-730-10	Black	Matt	9.53	9.53	12.09	12.70	5000

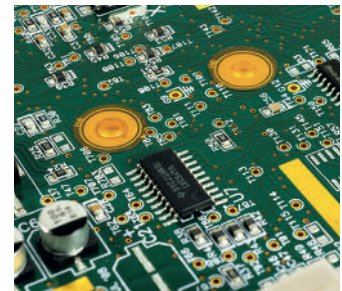
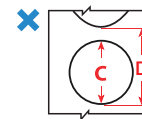


Printed circuit board label material range

B#	Base material	Adhesive	Colour	Finish	Application	Solvent	Fuel/Oil	Abrasion	High Heat	Low Temp	Removable	electrostatic dissipative
B-420	Polyester		White	Gloss	Pre-process labeling of Printed Circuit Board and Electronic Component process labelling, especially designed for laser engraving and die-cutting	✓		✓	✓	✓		
B-436	Polyimide	Removable	Amber	Matt	Printed Circuit Board and Component process labelling, cleanly removable	✓	✓	✓	✓	✓	✓	
B-717	Polyimide	Permanent	White	Gloss	Printed Circuit Board and Component process labelling, static dissipative adhesive	✓		✓	✓	✓		✓
B-718	Polyimide	Permanent	White	Gloss	Printed Circuit Board and Component process labelling, static dissipative adhesive	✓		✓	✓	✓		✓
B-719	Polyimide	Permanent	White	Matt	Printed Circuit Board and Component process labelling, static dissipative adhesive	✓		✓	✓	✓		✓
B-724	Polyimide	Permanent	Amber	Matt	Printed Circuit Board and Component process labelling	✓	✓	✓	✓	✓		
B-727	Polyimide	Permanent	White	Gloss	Printed Circuit Board and Component process labelling	✓		✓	✓	✓		
B-728	Polyimide	Permanent	White	Matt	Printed Circuit Board and Component process labelling	✓		✓	✓	✓		
B-730	Polyimide	Permanent	Black	Matt	Printed Circuit Board and Component process labelling, especially designed for laser engraving	✓		✓	✓	✓		
B-731	Polyimide	Permanent	Black	Matt	Printed Circuit Board and Component process labelling, especially designed for laser engraving, static dissipative adhesive	✓		✓	✓	✓		✓
B-734	Polyimide		White	Matt	Printed Circuit Board and Component process labelling, especially designed for laser engraving	✓		✓	✓	✓		
B-735	Polyimide		White	Matt	Printed Circuit Board and Component process labelling, especially designed for laser engraving, static dissipative adhesive	✓		✓	✓	✓		✓
B-777	Polyimide	Permanent	White	Gloss	Printed Circuit Board and Component process labelling, resists to aggressive cleaning processes, ideal for small font printing	✓		✓	✓	✓		
B-7727	Polyimide	Permanent	White	Gloss	Printed Circuit Board and Component process labelling, especially designed for auto-apply	✓		✓	✓	✓		

Auto-apply masking film

Diagram	Order Reference	Colour	Finish	Diameter C (mm)	Vertical Repeat D (mm)	Labels per Roll
B-7634: Polyimide						
✗	CMKC-0197-7634	Clear	Gloss	5.00	8.03	5000
✗	CMKC-0236-7634	Clear	Gloss	6.00	9.01	5000
✗	CMKC-0276-7634	Clear	Gloss	7.00	10.16	5000
✗	CMKC-0315-7634	Clear	Gloss	8.00	11.04	5000
✗	CMKC-0354-7634	Clear	Gloss	9.00	12.15	5000
✗	CMKC-0394-7634	Clear	Gloss	10.00	13.02	5000
✗	CMKC-0433-7634	Clear	Gloss	11.00	14.04	5000



Clean Liner Technology

Brady's traceability labels can be equipped with Clean Liner Technology (CLT), an innovative solution that prevents adhesive bleeding. CLT enables a smooth production cycle by eliminating downtime due to labels not being placed, or due to a fractured liner.

Electrostatic discharge

Brady's B-717, B-718, B-719 and B-731 printed circuit board labels do not contain high charging materials. The labels prevent the build-up of static electricity to protect PCB's from potentially damaging electrostatic discharge.

Product Information Resources



PCB Automation Web Page

Visit Brady's dedicated web page for printed circuit board identification www.bradyeurope.com/pcb.

You will find links to the full offer of materials suitable for PCB labelling as well as a range of automated print & apply systems.



Design any label with Brady Workstation apps

Brady Workstation offers professional, intuitive apps to design quality product and cable labels and safety signs.

With Brady Workstation label design becomes easier, faster and quickly adaptable to new label norms thanks to centralised updates. For more information visit www.bradyeurope.com/workstation.



Find us on YouTube

On Brady's YouTube channel you can find a quick overview of our wide range of portable and benchtop printers and several how-to videos.

www.youtube.com/bradyeurope



Downloads

Find the latest product updates, manuals, tutorials, printer drivers, product demos and much more for your Brady products on www.bradyeurope.com/downloads.



Brady Technical Data Sheets

For indept information on any Brady material or print ribbon, visit www.bradyeurope.com/tds. To search, you enter keywords pertaining to your desired material or If you know the brady "B"-number for the material, simply enter the appropriate number.



Enter B# (B-XXX) or keyword



Україна, Київ
UKRMARK
ТОВ "ЮМП ЗАХІД"
Tel.: +38 050 314 9011
Tel.: +38 067 406 4804
Email: sales@ukrmark.com

**Our mission is to identify and protect
people, products and premises**



To help minimise our impact on the environment,
Brady limits its number of reprints.

Updated versions are always available for
download on www.bradyeurope.com.



Search for: EUR-M-880-EN

Your distributor

24/03/2021